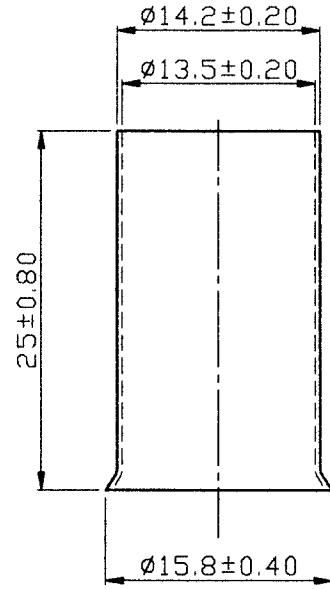


A B C D E F G H

REV	DESCRIPTION	DATE
-----	-------------	------



NOTE :

1. MAXIMUM ELECTRIC CURRENT : 

A.W.G.	2/0		
AMP.	265		
2. WIRE RANGE : 2/0 A.W.G. ( < 70 mm<sup>2</sup> )
3. SURFACE TREATMENT : TIN PLATED

Tolerance Unless Otherwise Specified	
0 > 6 mm ±0.20	ANGLE
6 > 18 mm ±0.30	0° REF ±
18 > 30 mm ±0.40	±
30 > 75 mm ±0.50	±

NAME	NON-INSULATED CORD END TERMINALS			UNIT	
PART NO.	EN70-25	MATERIAL	COPPER TUBE	APPROVED	
NUMBER	KT-96151-C	SCALE	SHEET	PAGE	CHECKED
DATE	2007/04/12	2/1	1-0	10F1	DRAWN 張馨尹

**KST. K.S. TERMINALS INC.**

A B C D E F G H