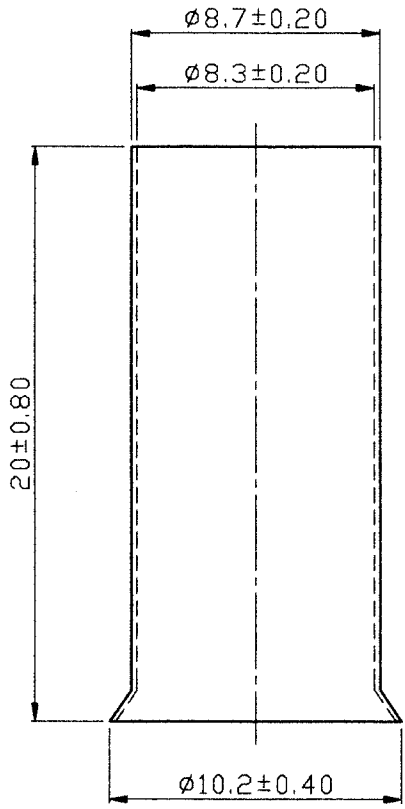


A B C D E F G H

REV	DESCRIPTION	DATE
-----	-------------	------

1
2
3
4
5
6



- NOTE :
1. MAXIMUM ELECTRIC CURRENT :

A.W.G.	2		
AMP.	170		
 2. WIRE RANGE : 2 A.W.G. (35 mm²)
 3. SURFACE TREATMENT : TIN PLATED

Tolerance Unless Otherwise Specified	
0 > 6 mm ± 0.20	ANGLE
6 > 18 mm ± 0.30	0° REF ±
18 > 30 mm ± 0.40	±
30 > 75 mm ± 0.50	±

NAME	NON-INSULATED CORD END TERMINALS			UNIT	
PART NO.	EN35-20	MATERIAL	COPPER TUBE	APPROVE	
NUMBER	KT-96140-C	SCALE	SHEET PAGE	CHECKED	
DATE	2007/04/12	4/1	1-0 10F1	DRAWN	張馨尹

KST. K.S. TERMINALS INC.

A B C D E F G H