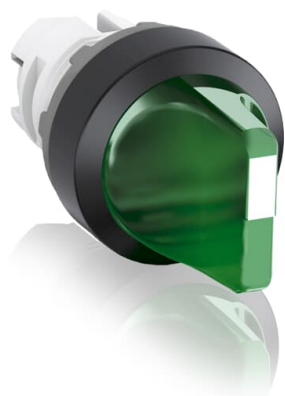


PRODUCT-DETAILS

M2SS2-11G

M2SS2-11G Selector Switch



General Information

Extended Product Type	M2SS2-11G
Product ID	1SFA611201R1102
EAN	7320500285015
Catalog Description	M2SS2-11G Selector Switch
Long Description	Modular Selector Switch - 2-Pos Maintained - Short handle - Green - Illuminated - Black plastic - No contact block

Ordering

E-Number (Norway)	4372412
E-Number (Sweden)	3715812
EAN	7320500285015
Minimum Order Quantity	10 piece
Customs Tariff Number	8536501999

Dimensions

Product Net Width	0.048 m
Product Net Height	0.03 m
Product Net Depth / Length	0.05 m
Product Net Weight	0.024 kg

Container Information

Package Level 1 Units	1 piece
Package Level 1 Width	0.11 m
Package Level 1 Height	0.03 m
Package Level 1 Depth / Length	0.15 m
Package Level 1 Gross Weight	0.024 kg
Package Level 1 EAN	7320500285015

Environmental

Ambient Air Temperature	Operation -25 ... +70 °C Storage -30 ... +85 °C
RoHS Status	Following EU Directive 2011/65/EU

Additional Information

Actuator Type	Short handle
Bezel Material	Black Plastic
Block	No contact block
Color	Green
Degree of Protection	Front IP66 Terminals IP20
Function	Maintained
Illumination	Illuminated
Maintained Positions	A, C
Mechanical Durability	0.5 million
Mounting Position	Horizontally mounted
Product Main Type	M2SS2
Product Name	Selector Switch
Product Range	Modular
Product Type	M2SS
RoHS Date	0635 4
Sub-Function	2-position

Certificates and Declarations (Document Number)

Data Sheet, Technical Information	1SFC151007C02_
Declaration of Conformity - CE	2CMT2015-005452
Environmental Information	1SFC151010D0201
Instructions and Manuals	1SFC151011M0201
RoHS Information	2CMT2015-005452

Classifications

ETIM 4	EC002024 - Accessories for control circuit devices
ETIM 5	EC000222 - Front element for selector switch
ETIM 6	EC000222 - Front element for selector switch
ETIM 7	EC000222 - Front element for selector switch
Object Classification Code	S

UNSPSC

39121500

WEEE Category

Product Not in WEEE Scope

Categories

Low Voltage Products and Systems → Control Products → Pilot Devices → Modular Plastic Range

