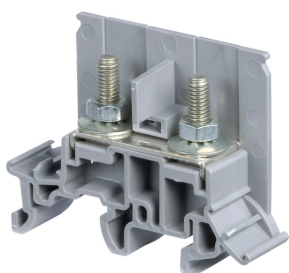


PRODUCT-DETAILS

M6/13.FF

M6/13.FF



General Information

Extended Product Type	M6/13.FF
Product ID	1SNA115626R1600
EAN	3472591156263
Catalog Description	M6/13.FF
Long Description	- Two stud terminal block for ring lug connection, - Removable partition for jumpering.

Ordering

Color	Grey
Minimum Order Quantity	25 piece
Customs Tariff Number	85369010

Popular Downloads

Data Sheet, Technical Information	1SNC160020C0201
Instructions and Manuals	1SNC160020C0201

Dimensions

Product Net Width	13 mm
Product Net Height	51.5 mm

Product Net Depth / Length	33 mm
Product Net Weight	16 g

Technical

Rated Cross-Section	6 mm ²
Spacing	13 mm
Connection Type	Stud
Function	Feed-through
Number of Levels	1
Connecting Capacity Main Circuit	Stud / Flexible 1x 0.5 ... 6 mm ² Stud / Rigid 1x 0.5 ... 6 mm ²
Rated Current (I _n)	Main Circuit 41 A
Rated Short-time Withstand Current (I _{cw})	for 1 s 8000 A
Rated Voltage (U _r)	800 V
Rated Impulse Withstand Voltage (U _{imp})	8 kV
Insulation Material	Polyamide
Mounting on DIN Rail	G32 (32 x 15 mm Mounting Rail) acc. to IEC 60715 TH35-7.5 (35 x 7.5 mm Mounting Rail) acc. to IEC 60715 TH35-15 (35 x 15 mm Mounting Rail) acc. to IEC 60715
Tightening Torque	Cable Lug 2.5 N·m

Technical UL/CSA

Maximum Operating Voltage UL/CSA	Main Circuit 600 V
Connecting Capacity Main Circuit UL/CSA	Stud / Rigid 1x 20 ... 10 AWG
Flammability According to UL94	V-0

Environmental

Ambient Air Temperature	Operation -55 ... +110 °C Storage -55 ... +110 °C
-------------------------	--

Certificates and Declarations (Document Number)

CSA Certificate	1SND168003A0200
cUL Certificate	1SND168000A0202
Declaration of Conformity - CE	1SND225002U1000
EAC Certificate	1SND161009A1100
Environmental Information	1SND220039E1002
Instructions and Manuals	1SNC160020C0201
RoHS Information	1SND230021F0201

Classifications

Object Classification Code	X
ETIM 4	EC000897 - Feed-through terminal block

ETIM 5	EC000897 - Feed-through terminal block
ETIM 6	EC000897 - Feed-through terminal block

Container Information

Package Level 1 Units	25 piece
Package Level 1 Width	81 mm
Package Level 1 Depth / Length	220 mm
Package Level 1 Height	47 mm
Package Level 1 Gross Weight	0.4 kg
Package Level 1 EAN	3472591156263
Package Level 2 Units	600 piece
Package Level 2 Width	300 mm
Package Level 2 Depth / Length	500 mm
Package Level 2 Height	300 mm
Package Level 2 Gross Weight	9.6 kg
Package Level 3 Units	14400 piece

Categories

Low Voltage Products and Systems → Connection Devices → Terminal Blocks → Railway Terminal Blocks

